

MultiCom Classic IV



*The entry-level access router
with 2 leased and 2 ISDN BRI lines*

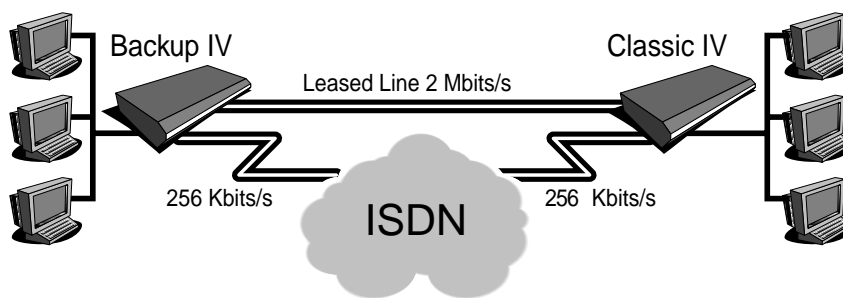
The MultiCom Classic IV is the ideal solution for connecting remote workgroups to a corporate network via leased lines or ISDN. The MultiCom Classic IV router is equipped with an Ethernet interface, two serial (2 x 2 Mbits/s) and two BRI (2 x 128 Kbits/s) interfaces and allows secure Backup and Overflow of leased lines over ISDN.

The MultiCom Classic IV, along with the other members of the MultiCom family, presents a complete set of high-end features: Multi-NAT and Multi-PAT, integrated DHCP server, integrated statefull firewall with syslog reporting and optional high-security encryption thanks to the International Data Encryption Algorithm (IDEA) with 128 bits encryption key.

LIGHTNING

- Automatic ISDN channel bundling
- Backup and Overflow of Leased Line over ISDN
- Built-in bulletproof firewall
- IDEA option with 128 bits encryption key


SWISS QUALITY



Flash upgradable

LIGHTNING

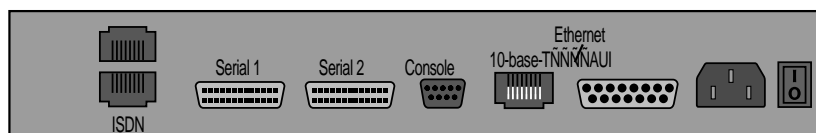
LIGHTNING Instrumentation SA
Avenue des Boveresses 50
CH-1010 Lausanne
Switzerland

Phone +41 21 654 2000
Fax +41 21 654 2001
E-mail info@lightning.ch

www.lightning.ch

Your LIGHTNING representative: _____

- ¥ AutoConfiguration^a via a Web-browser, for router and computers for ISDN Internet access
- ¥ Connects all (or selected) local users to the Internet
- ¥ Port & Address Translation (NAT/PAT) enables multiple users to access the Internet simultaneously while paying only for one Single Internet User Account
- ¥ Allows remote users to dial into your local network
- ¥ Intelligent dynamic IP allocation on the server side makes it compatible with NAT/PAT
- ¥ DHCP Server automatically assigns IP configuration to Windows 95/98/NT, Apple Macintosh and UNIX clients on the LAN
- ¥ Works with any PC computer, Macintosh or Unix with an Ethernet interface that runs TCP/IP. DHCP addressing is preferred but not necessary
- ¥ Compatibility tested with all other major ISDN routers and boards
- ¥ Allows simultaneous Internet access and direct Intranet access for teleworking
- ¥ Multi-protocol routing: IP and Novell[®] IPX
- ¥ Transparent bridging
- ¥ Static and dynamic addressing
- ¥ Supports RIP and SAP for IPX
- ¥ IPX spoofing for RIP, SAP, SPX, serial and keep-alives saves ISDN connection costs
- ¥ Dial-on-Demand routing, which dials the ISDN line only when it is needed and then automatically takes the connection down when idle
- ¥ Bandwidth-on-Demand provides flexible bandwidth when needed
- ¥ Built-in Web-Based Management
- ¥ Local console and remote management via Telnet, FTP and HTTP
- ¥ EasyConfig^a wizard for Windows 95/98/NT
- ¥ Flash EPROM for easy firmware upgrades, locally and remotely
- ¥ Call Detail Records for efficient tracking of incoming and outgoing calls
- ¥ Easy troubleshooting thanks to detailed PPP status and tracking of line-opening packets
- ¥ Password-protected System Management
- ¥ PAP (Password Authentication Protocol)
- ¥ CHAP (Challenge Handshake Authentication Protocol) with periodical challenge
- ¥ CLI (Calling Line ID)
- ¥ PPP call-back with password protection
- ¥ ISDN call-back allows hosting services without a dedicated leased-line while being always reachable
- ¥ Firewall filtering for controlled access to your network with SecureWall^a
- ¥ Selective IP Address Routing
- ¥ IDEA^a 128 bit key algorithm conforming to highest security standards
- ¥ Dimensions: 19"x1Ux24 cm
- ¥ Weight: 3.1 kg
- ¥ Ethernet: 10-base-T RJ45 or AUI IEEE 802.3, 10 Mbits/s
- ¥ Display: Ethernet, 2 Serial, 2 BRI, Power
- ¥ Power: 100/230V; 40W; 50/60 Hz
- ¥ Temperature: 5 to 40 C
- ¥ Humidity: 10 % to 85 %
- ¥ Noise: Noiseless



UNIX

Windows 95/98/NT



Includes
**Microsoft
Internet
Explorer** ..

© LIGHTNING Instrumentation SA 2000. All rights reserved. MultiCom, Lightning, EasyConfig, SecureWall and Cryptobit trademarks of LIGHTNING Instrumentation SA. All other trademarks belong to their respective owners. All specifications subject to change. Printed in Switzerland